



QINGYAXI

time is precious, use it fishing



# WELCOME TO QING YA XI

*Dear Angler,*

*By now you will have arrived, and I hope you are relaxing over a cup of coffee in the rod room.*

*If you have met Pip Saunders, the river keeper, I am sure he will have introduced himself or if it is the weekend, you may meet the owner Justin Turner and some of his young family.*



Pip Saunders - River Keeper

*Lock Keepers Cottage has just been extensively renovated as a holiday rental. The guests are probably fly fishers as you are, but they will not be fishing on your day or walking the river. Please respect their privacy, as they will do yours.*

*Here is a summary of the fishing and what to expect; have a lovely day.*

For some the River Itchen is the ultimate chalkstream. Much shorter than its counterpart the River Test (17 miles vs. 39 miles), the Itchen is formed by the Alre, Tichborne and Candover Brook, which come together just below Alresford.

For seven lovely miles it flows from the confluence westerly through the now mostly defunct water meadow pastures until it reaches the ancient capital of England, Winchester. Heading south it flows almost beneath the shadow from the tower of the Cathedral, alongside the playing fields of Winchester College and on into open country again.

Eventually, fourteen miles into its journey the river reaches the conurbation of Southampton, turning brackish at the Woodmill salmon pool before spilling into the ocean.



Where river meets sea .....

At Qing Ya Xi we are just 7 miles from the open sea as the crow flies, so don't be surprised to see salmon and sea trout.

### **About Qing Ya Xi fishing**

The rod room is the place to make your base for the day but do feel free to make use of the outdoor seating and BBQ facilities. Essentially the fishing divides into four sections.



Rod Room on right of red tile house



**Downstream of the rod room (yellow on map):** You will have seen the river to your left as you drove in. As you move up from the entrance gate there are a series of weirs, with deep holding spots and undercuts of the far bank.



The water is fast and turbulent, with shade from the trees so it is not always easy to spot the fish so if you like to 'prospect' this is a good place to start. Just above the fork there is a foot bridge. Cross over here.

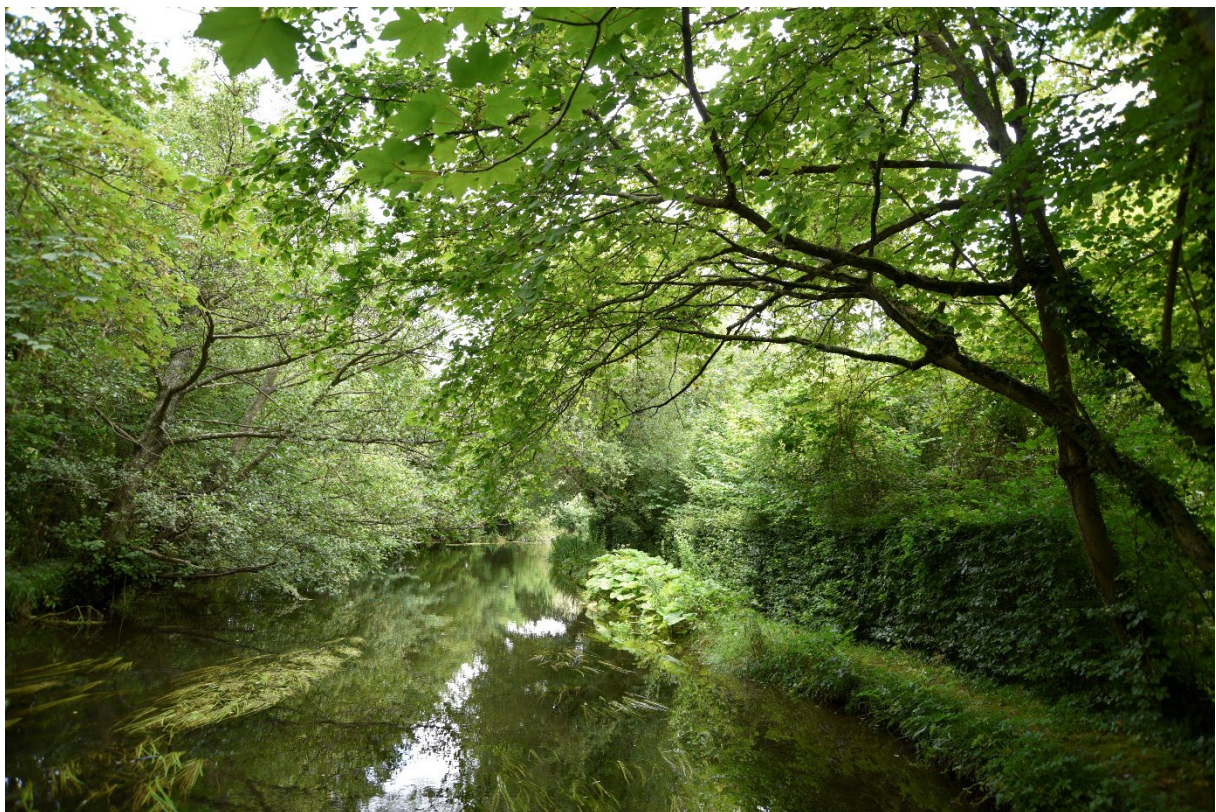
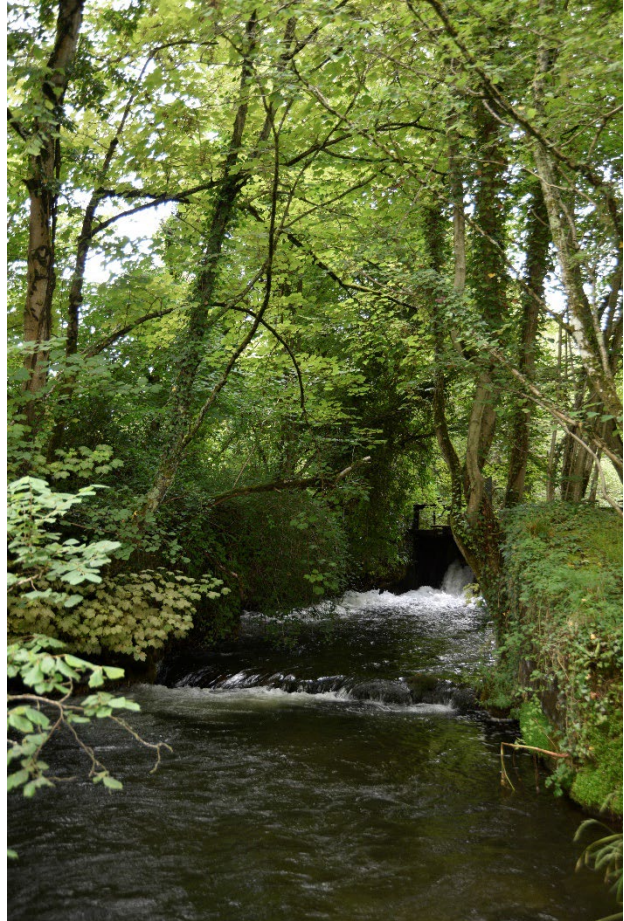




**The Navigation (yellow on map):** You are now on the section called The Navigation, the remnants of the canal originally dug back in the 1700's but largely obsolete for the past two centuries. There is an exciting pool below at the hatches, albeit tricky to fish.

As you move on past the hatches you will see some brown piping which is the recently installed eel ladder. All the fishing is done from the right-hand bank as you look upstream. You will see people walking along the tow path on the opposite side.

The impoundment created by the hatches considerably slows the speed of the water but this upper section does hold some good fish who are well used to seeing people. The casting is not the easiest and this section ends when you are unable to go further, roughly 150 yards upstream of the hatches. Retrace your steps.





**The Leat carrier (light green on map):** This is a little side stream that you will see heading off to the left as you retrace your steps. This is our nursery stream where the trout spawn in the winter and also provides the flow to our rearing ponds. You might sometimes pick up a small wild fish along here.



Leat in middle of photo

**River Itchen (dark green on map):** Start from the footbridge just above the fork, fishing from the right bank as you look upstream. This is the longest section of the four, deeper and narrower than most of the rest, with a flow that encourages fish to hold station. Stealth is very much at a premium.



You will start fishing along the garden bank. On the opposite side are some tall conifers; Pip says this is where you are most likely to see a salmon. The river then curves to the right, the opposite bank opening up into either meadows or reed beds all the way to the top.





As you cross over a little bridge Kingfisher stream is below you, another trout nursery but we don't fish this. The banks from this point upstream are spongy, so do tread carefully to avoid spooking the fish you haven't yet seen. All the way from here on up you will find fish; the water clarity is usually exceptional. There is a small shelter if you get caught in a squall, but this is generally sheltered with woods to your back nearly the whole way.





You will know when you have reached the top of the beat when you arrive at the fence.  
Return the way you came.

### Rod Room

The rod room has running water and electricity. Tea and coffee are provided, as is crockery, cutlery and a good dining table and chairs. There are BBQ facilities outside.

### WC

The WC is in a small building just beyond Lock Keepers Cottage. See map.

### Places to eat

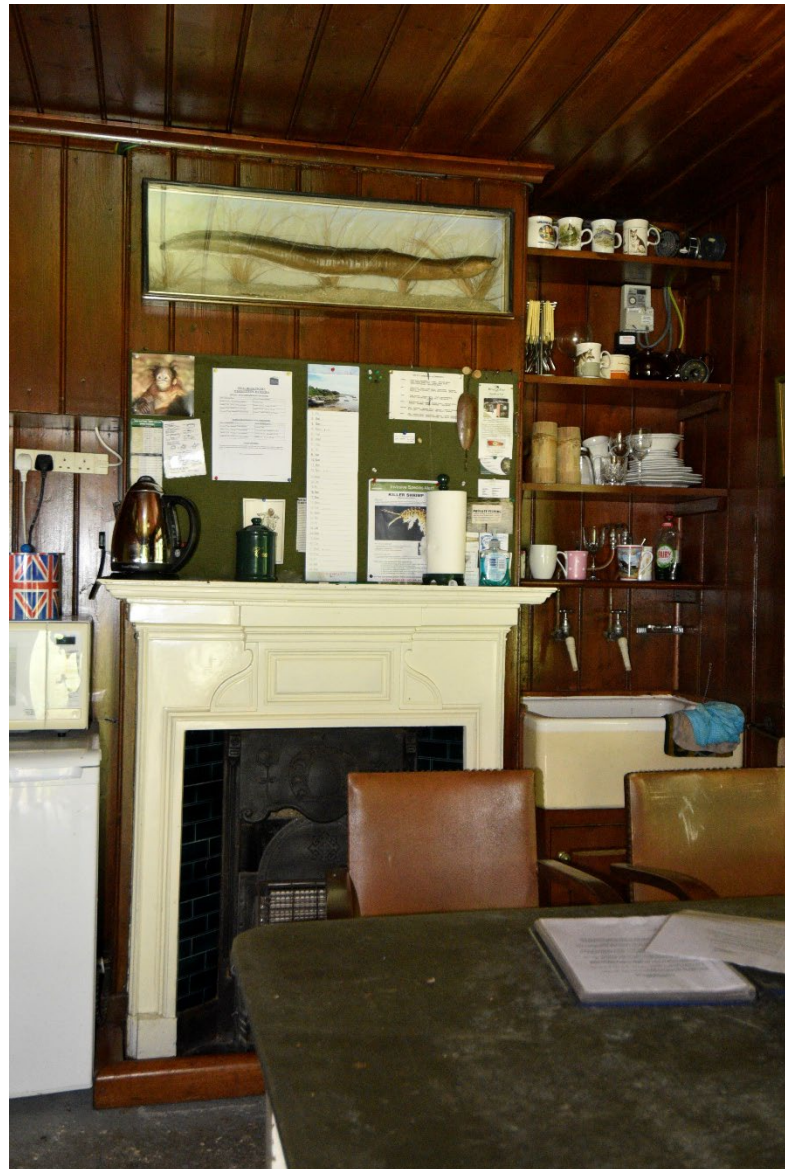
- Brambridge Garden Centre, Kiln Lane (50 yards)
- The Dog & Crook, 18 Brambridge, Colden Common, Eastleigh SO50 6HZ (0.5 mile)

[www.thedogandcrook.co.uk](http://www.thedogandcrook.co.uk)

- The White Horse, Main Rd, Otterbourne SO21 2EQ (1 mile)  
[www.idealcollection.co.uk/brands/the-white-horse](http://www.idealcollection.co.uk/brands/the-white-horse)

### Local shops

- Brambridge Garden Centre. Turn left out of the entrance gate. 50 yards.
- Tesco & Tesco Filling Station. 138 Twyford Rd, Eastleigh SO50 4HP. 2 miles.
- Fishing & clothing shops – Stockbridge has Robjents and Orvis. 15 miles.





## Places to visit

- Winchester Cathedral – Izaak Walton, writer of *The Compleat Angler*, is buried here. Free. 3 miles.
- Marwell Zoo. Admission charge. 3 miles.
- Sir Harold Hilliers Gardens. Admission charge. 7 miles.

I will be sending you an email in a few days time. If you have a few minutes to give us some feedback from your visit it would be really appreciated.

I hope that you have a great day with us at Qing Ya Xi.

Tight lines!

A handwritten signature in black ink. The word "Simon" is written in a cursive, slightly slanted font. Below the name is a long, sweeping horizontal line that starts under the 'S' and extends past the end of the word.

**Simon Cooper**  
**Fishing Breaks Founder & Managing Director**



## Emergency

The address here is:

**Qing Ya Xi (formerly Kingfisher Lodge)**  
**Kiln Lane**  
**Brambridge**  
**Eastleigh**  
**SO50 6HT**

### **Doctors surgery**

Colden Common Surgery, 45 Spring Lane, Colden Common, Winchester SO21 1SB  
01962 712202

### **Local hospital**

Royal Hampshire County Hospital  
Romsey Road  
Winchester  
SO22 5DG  
01962 863535

NHS 111 or Emergency Services 999

### **Chemist**

Colden Chemist, 19 Spring Ln, Colden Common, Winchester SO21 1SD  
01962 715300